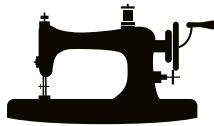


My
SOFT CACTUS

Doll



WITH MY OWN BEAUTIFUL
SELF SEWN
LITTLE DOLL CLOTHES

COMPOSED FOR YOU BY SOFT CACTUS



User manual with sewing instructions v1.1

TERMS OF USE

READ THIS FIRST with mom, dad or another adult !!

WARNING! Risks are always involved when ironing or sewing with or without sewing machine. This means it should always be done by or under the supervision of an adult.

The doll itself is conform to the EEC EN71 safety regulations/ASTM F 963-11.

WARNING! The doll and accessories are not suitable for children under 3 years as it contains small pieces.

The included Soft Cactus fabrics are Oeko-Tex certified, so safe for children.

Do not touch the doll with a pen or other inks, this will irreparably damage the doll.

A suitable age to sew the clothes is difficult to indicate, it depends from child to child and on the offered support.

INTRODUCTION

*This product is a **doll + sewing** set to create the doll clothes yourself. The doll already wears shoes and underpants. With the included fabrics, velcro, English embroidery and this extensive user manual you can create **2 sets of clothes**, each consisting of a dress, an apron and a hair ribbon.*

It is fun and a little bit the idea to do it with mom, grandmother or aunt. A unique and instructive mommy-daughter (or son) -moment.

Enjoy to be creative together, to learn, dream and to achieve something together!

CONTACT

We always tend to offer the best possible service.

If you have any comments, advice or suggestions for us, we would like to hear them from you. This can be done by sending a mail to info@SoftCactus.be

REQUISITES

Included:

- User manual (in Dutch)
- The sewing pattern
- 1 x Doll with shoes and underpants
- Material for 2 clothing sets:
 - 2 x 3 pieces of Soft Cactus fabric: 48cm wide & 22cm high
 - 2 x 16cm velcro for the rear closure
 - 2 x 39cm English embroidery for the bottom of the skirt

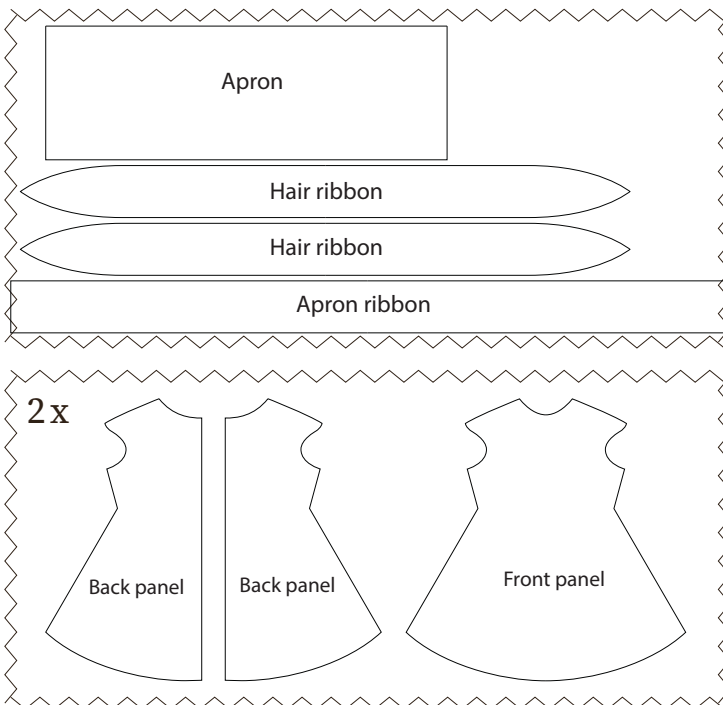
To provide yourself:

Fabric scissors, pen, ruler, sewing machine or needles, iron, pins, matching yarn. A little help from mother or grandmother or aunt (or dad)

SEAM ALLOWANCE

The seam allowance is included in each pattern piece and is 0.5cm.

CUTTING CHART



CUTTING

Consider what fabric you want to use on the outside of the dress and what fabric on the inside and what fabric you want to use for the headband and apron.

Cut out all the pattern pieces from the enclosed paper pattern. Use the cut parts as a template and trace them on the fabric with a ballpoint pen as shown in the cutting chart on previous page.

The seam allowance is already included in the pattern and is 0.5cm. This means that you will sew half a centimeter from the cut edges.

After cutting out, you will obtain the following:



***2x back side in outer fabric
1x front side in outer fabric***

***2x back side in inner fabric
1x front side in inner fabric***

***1x strip for the apron
1x the apron***

2x strip for the headband

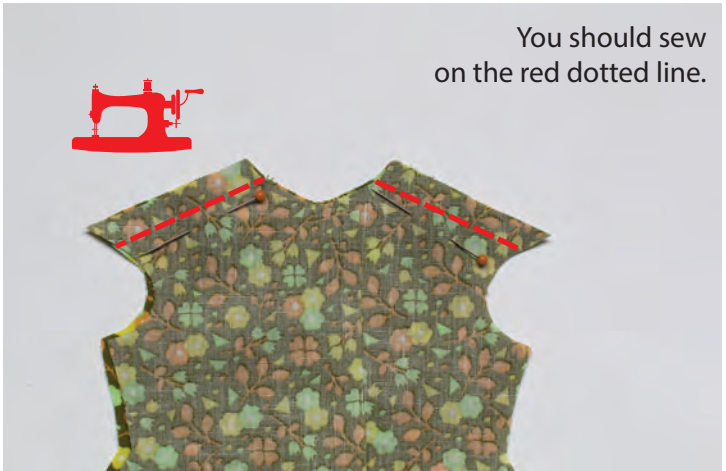
Now we can start sewing!

PART 1: The dress!

1. Place the parts of the outside fabric on each other, with the good side of the fabric facing each other.



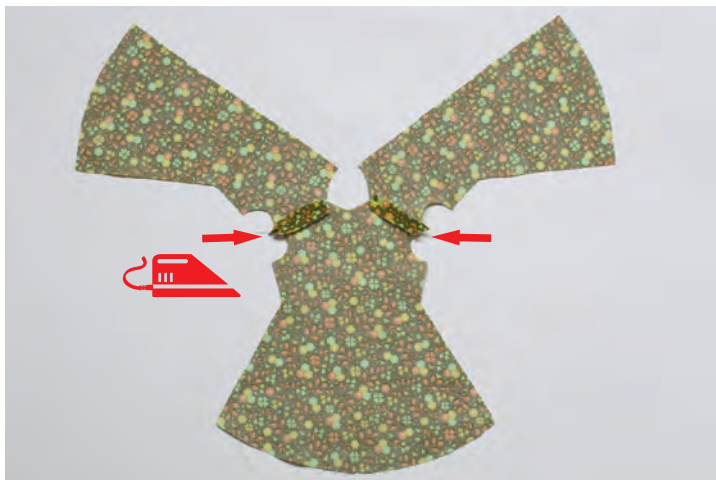
2. Align at the shoulders and fix with some pins. Stitch at the shoulders at 0.5cm from the side.



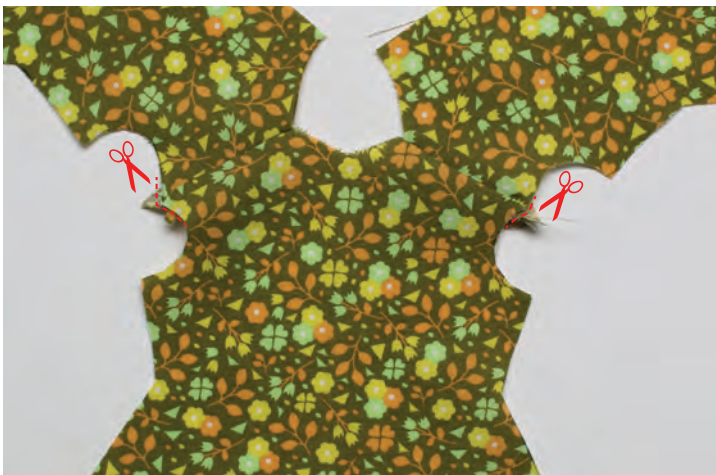
3. Repeat with the fabric you want to use at the inside of the dress. Good sides of the fabric facing each other, pin, and stitch at 0.5cm from the edge of the shoulders.



4. Fold everything open now and press open the seam allowances at the shoulders.



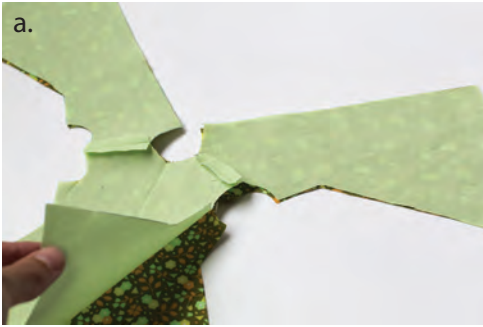
5. Cut away the seam allowance which sticks out at the sides.



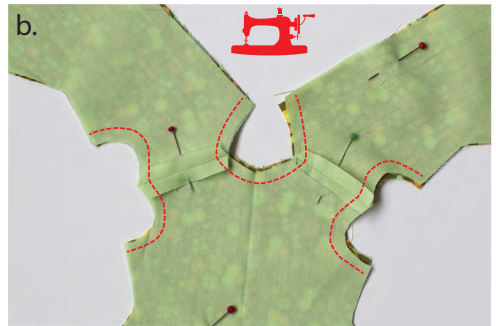
6. Repeat for the part you will use for the inside of the dress.



7. a. Place the first part on the second one, right side facing each other.
b. Precisely align the shoulder seams.



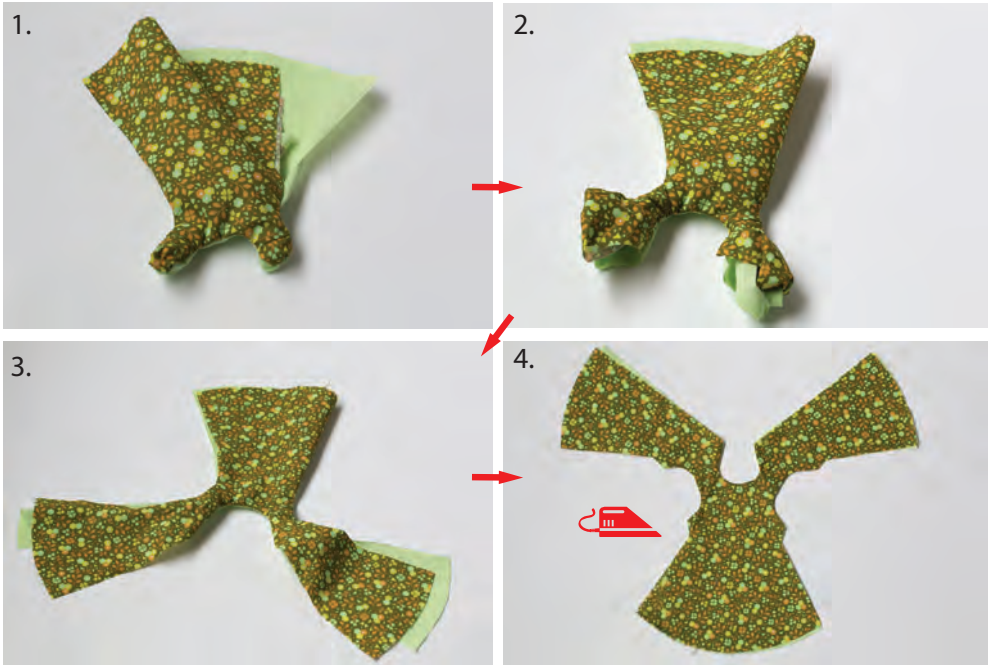
8. a. Pin everything together
b. Stitch now the neckline and the armholes at 0.5cm from the edge.



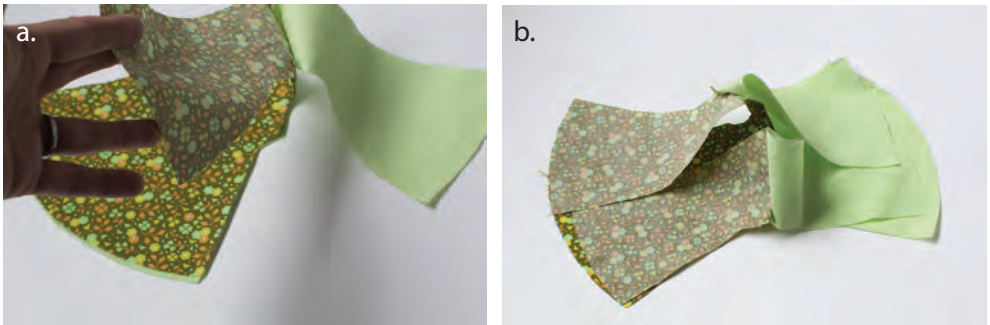
9. Carefully cut small triangles out of the seam allowance of the armholes and neck. Watch out that you don't cut through your newly sewn stitching !! Then remove all the pins.



10. Turn everything inside out by pulling the rear panels through the holes at the shoulders, so that to good side of the fabric comes at the outside. Push out all the nooks and flatten by ironing.



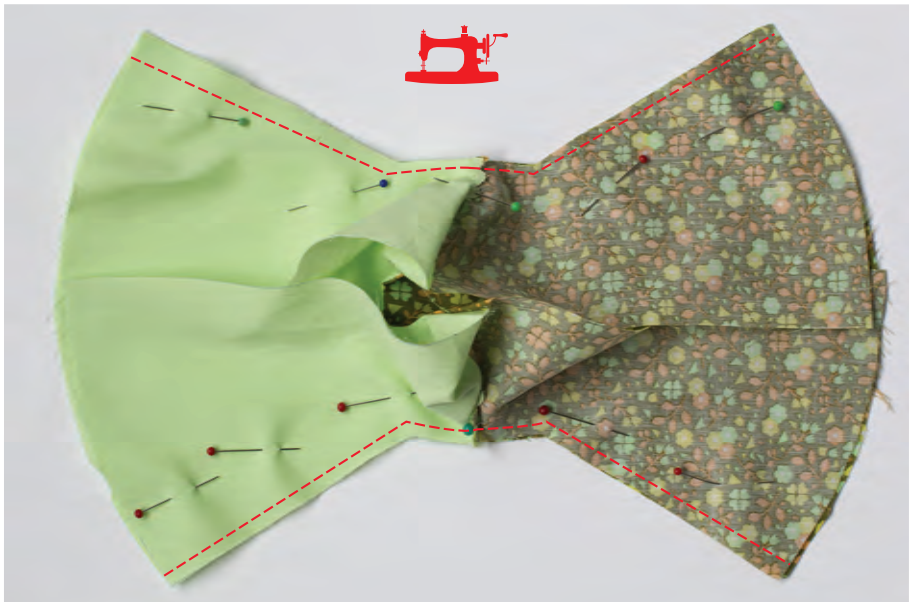
11. a. Fold the back panels of the outside fabric onto the front panel of the outside fabric, the good sides of the fabric facing each other.
b. Also fold the back panels of the inner fabric onto the front panel of the inner fabric, also right sides facing each other.



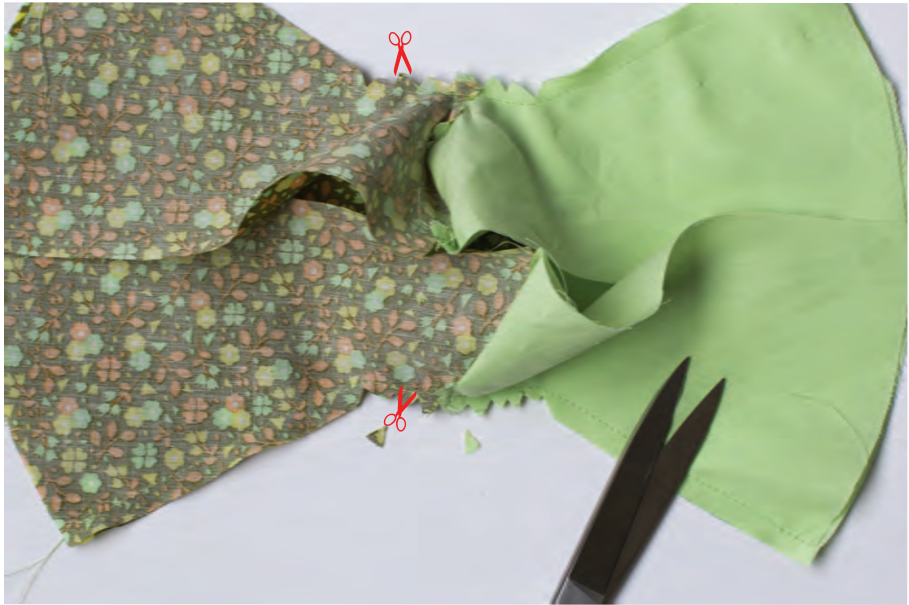
12. Make sure the shoulder seams align precisely. Then pin firmly.



13. Stitch in one go, at 0.5cm from the side edge of the inner fabric all the way over to the side of the outer fabric.
Do the same on the other side, as shown on the picture.



14. Carefully cut small triangles out of the slightly rounded parts of both sleeves. Take care not to cut into your stitching !!



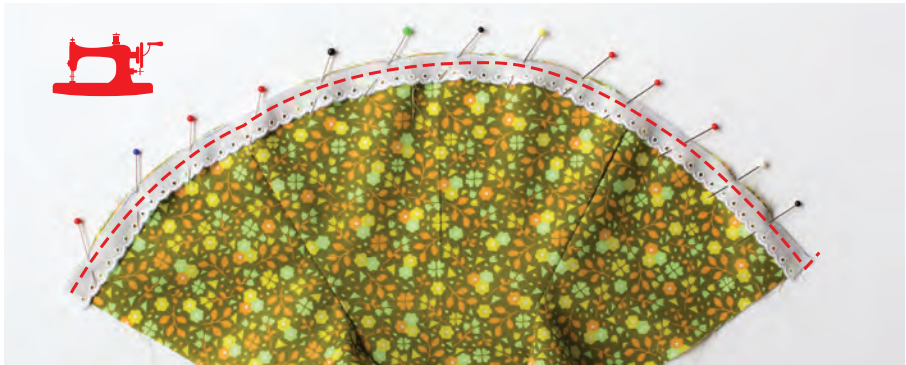
15. Fold open and press open all seam allowances.



16. Take 39cm of the English embroidery and cut across the entire length off the strip, so that a strip of 13mm remains.

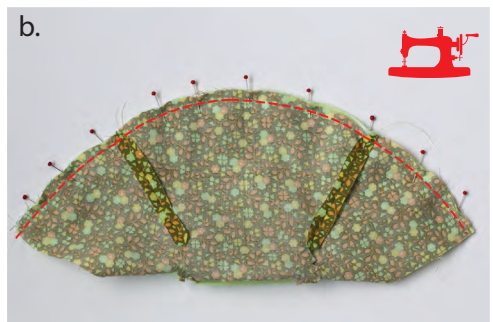


17. Place the outer dress with the right side facing up. Pin the lace precisely aligned with the bottom of the dress, good sides facing each other. The beautiful side of the piece of lace must face inwards, not towards the bottom of the dress. Be sure to pin the lace only to the outer fabric panel. Stitch at 0.5cm from the edge.

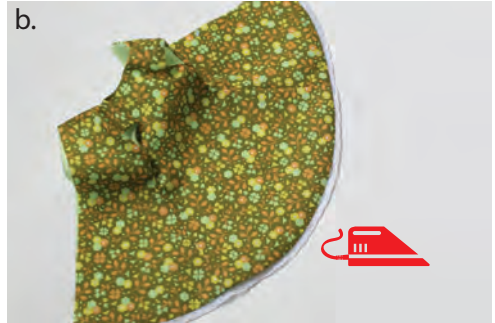


18. a. Now fold the right side of the outer dress onto the right side of the inner dress; the rounded bottom sides neatly aligned, with the piece of lace in between.

b. Pin together and turn around. You now see the stitching with which you attached the strip of lace. Stitch nicely on this first seam.

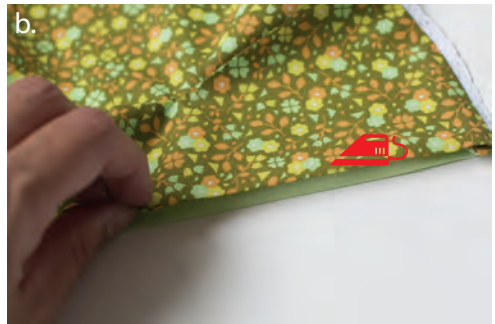


19. a. Turn everything inside out, along one of the openings so that the right side of the fabric is at the outside now.
b. Iron everything so that it gets nicely flat.

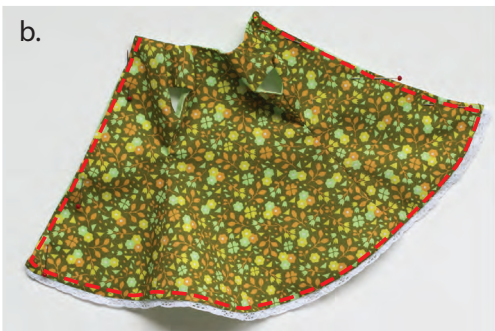
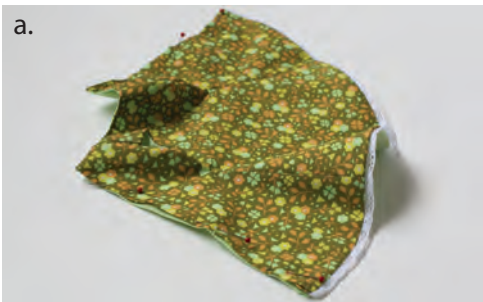


Your dress is almost finished now! Hang on!

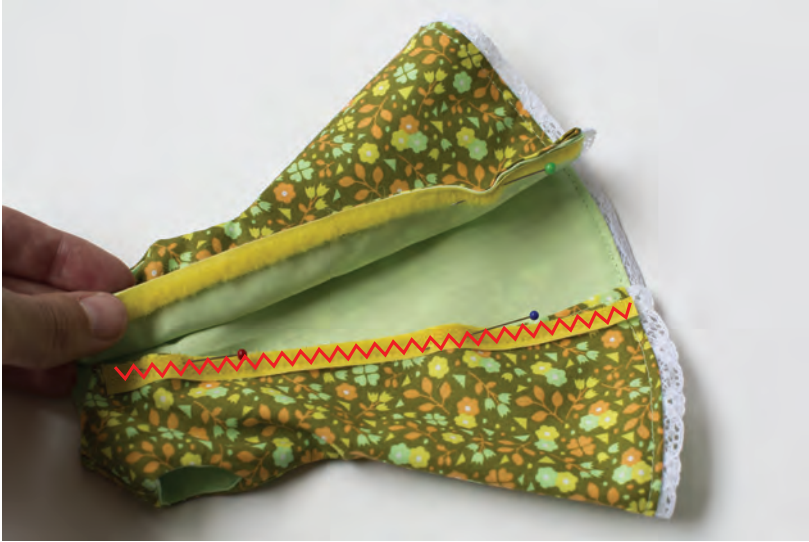
20. a. At the two openings, fold and press the inner and outer fabric 0.5cm inwards.
b. Align them precisely and press another time.



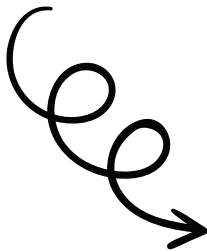
21. a. Pin along these openings.
b. Sew neatly at 2mm along the edge to close the openings. Start at the top and stitch in one go, passing at the bottom and then up again.



22. Pin one part of the velcro on the edge of the right backside of the dress, on the inside. It's best to use the piece of the velcro having the loops here, the piece which feels soft. Pin the other part of the velcro (the one with the hooks) on the left backside of the dress, on the outside. (This way it is less likely that the velcro will get stuck to the underpants.) Stitch the velcro to the dress. For extra strength you can use a zigzag stitch.



Hooray! The first part of the dress is finished!
Your doll will no longer get cold!
Try it on!



PART 2: The apron

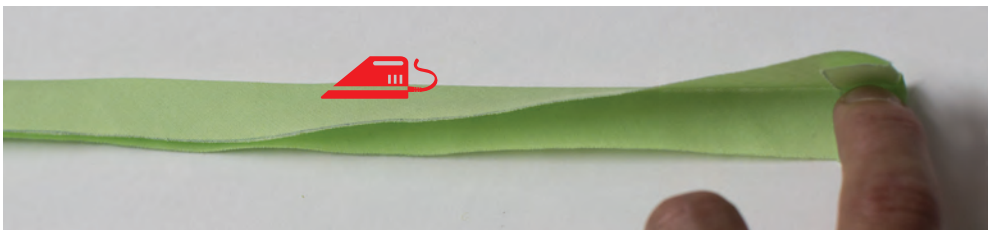
1. Take the long narrow strip. This will become the ribbon to tie your apron. Put it with the wrong side up. Mark the middle with a pen.



2. Fold both short sides half a centimeter inwards. Press.



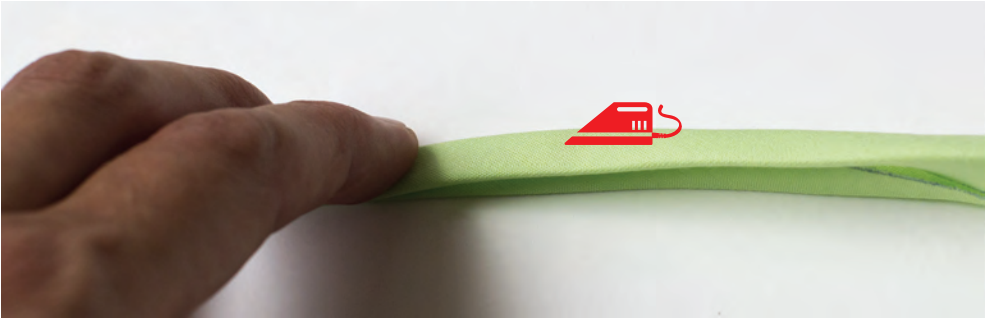
3. Now fold in two, along the long side and press firmly. The two short sides remain folded inwardly.



4. Fold open again. Fold each of the two long sides in two, upto the fold in the middle. Press firmly.



5. Fold again on the middle fold.



6. Pin and put it aside for a while.



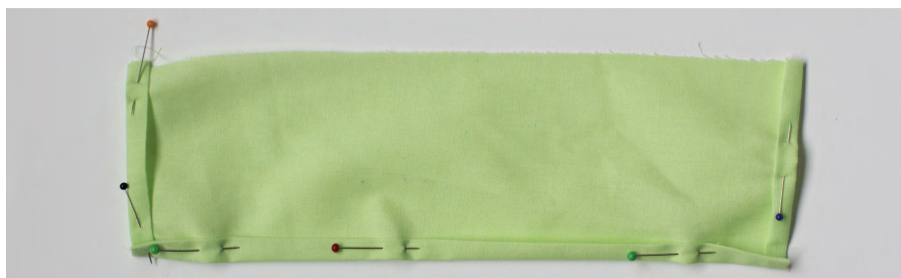
7. Take the piece that will become the apron and place it on the table with the wrong side of the fabric facing up.



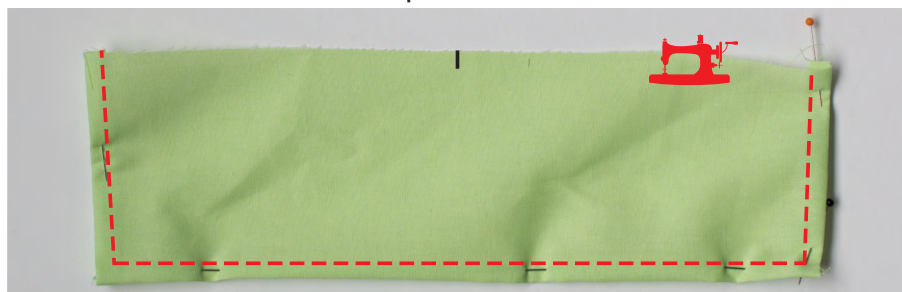
8. Fold 0.5cm of the short side and then another 0.5cm and press it with the iron.



9. Do this again for the other short side. And then also with one of the long sides. And pin everything.



10. Turn it around and stitch this at a little less than 0.5cm from the edge. Then mark the middle with a pen.



11. Sew two straight lines, parallel to each other and with a long stitch. Attention, do **not** fasten or fix at the ends now!! Cut of the thread in a way that they remain long.



12. Pull carefully the upper thread to the right and the lower to the left, but don't pull them out. It will now start to wrinkle at the top.



13. Wrinkle further so that you get puckers over a length of 11cm.



14. Make a little knot at the left side and at the right side to fix this obtained length of 11cm. Divide the puckers evenly with your fingers.



15. Take your long folded strip again and fold it open somewhere in the middle so that you can see the mark that you set previously. Align this mark to the middle of the puckers you just made. The mark you made on the apron should now align with the one on the ribbon. The apron lays with its right side of the fabric upwards now, the ribbon with the wrong side up.



16. Align the upper sides of the ribbon and the apron and pin them. Then stitch in the upper fold of the ribbon, in the fold closest to the edge, all over the width of the apron.



17. Fold the ribbon nicely over the middle fold, along its full length.
(The 3rd fold also folded inwards)



18. Pin this (the sides of the ribbon still also folded inwards) and stitch closely to the bottom edge of the ribbon from right to left.
Your apron is finished now!!

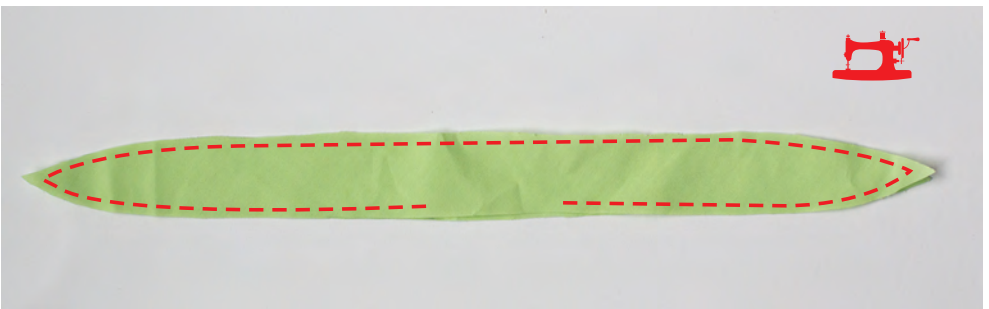


PART 3: The hair ribbon!

1. Take the remaining two parts, the parts of the hair ribbon. Align them precisely on top of each other, the right sides of the fabric facing inwards.



2. Stitch at 0.5cm from the edge, but leave an opening somewhere in the middle.



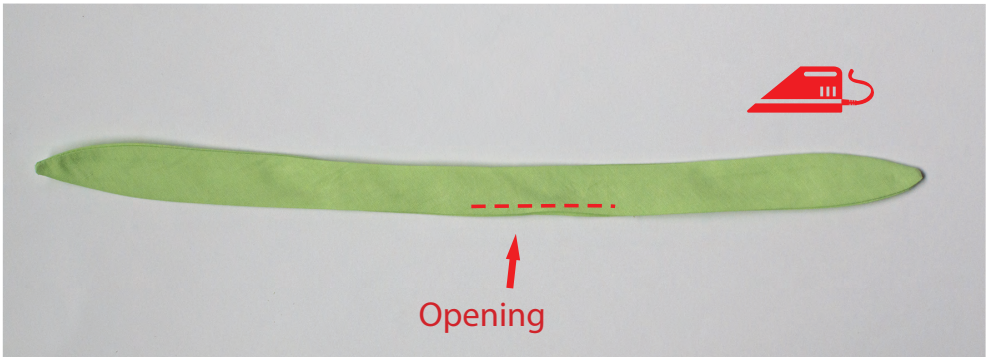
3. Almost completely cut of the seam allowance at both ends. Cut them this way that the ends stay pointy.



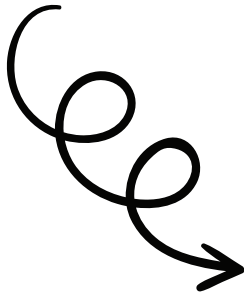
4. Turn it inside out now via the opening. You can use the backside of a fine paintbrush or a Chinese chop stick to carefully push out both ends.



5. Press it. Close the remaining opening by sewing with matching thread.



6. Congratulations! Your doll clothes are completely ready now!
Time to dress up!



TIP: You can adorn your clothes even more by sewing little buttons, bows, pearls or flowers onto the dress, the headband or on the apron.



